



Just 35
minutes
from
London

THROUGH A DIFFERENT LENS

*Unique historic film
and photography
location*

THE **HISTORIC**
DOCKYARD
CHATHAM





The Historic Dockyard Chatham spans over 80 acres and has over 100 historic buildings and structures, dating from the 1700's to the present day, making it suitable for any period location in a film, TV Show or photoshoot.

It provides the ideal location for your next shoot, steeped with genuine Victorian and Georgian buildings, cobbled streets, warehouses, docks and historic warships, all on one site.



*It couldn't have worked out better from our side.
Great location, amazing crowd base in the Fitted Rigging
House, best unit base in the land in Slip 5, and really
helpful wonderful staff with Julie and yourself.*

IAN LUMSDEN



LOCATION BENEFITS



PARKING & UNIT BASE

We have plenty of onsite parking, not just for a Unit Base but, also to accommodate cast, crew and SA parking requirements. There is no need to source separate parking facilities once you have chosen us as a location.



LOCAL ACCOMMODATION

We have great relationships with local accommodation providers, such as the Bridgewood Manor Hotel & Spa.



PRIME LOCATION

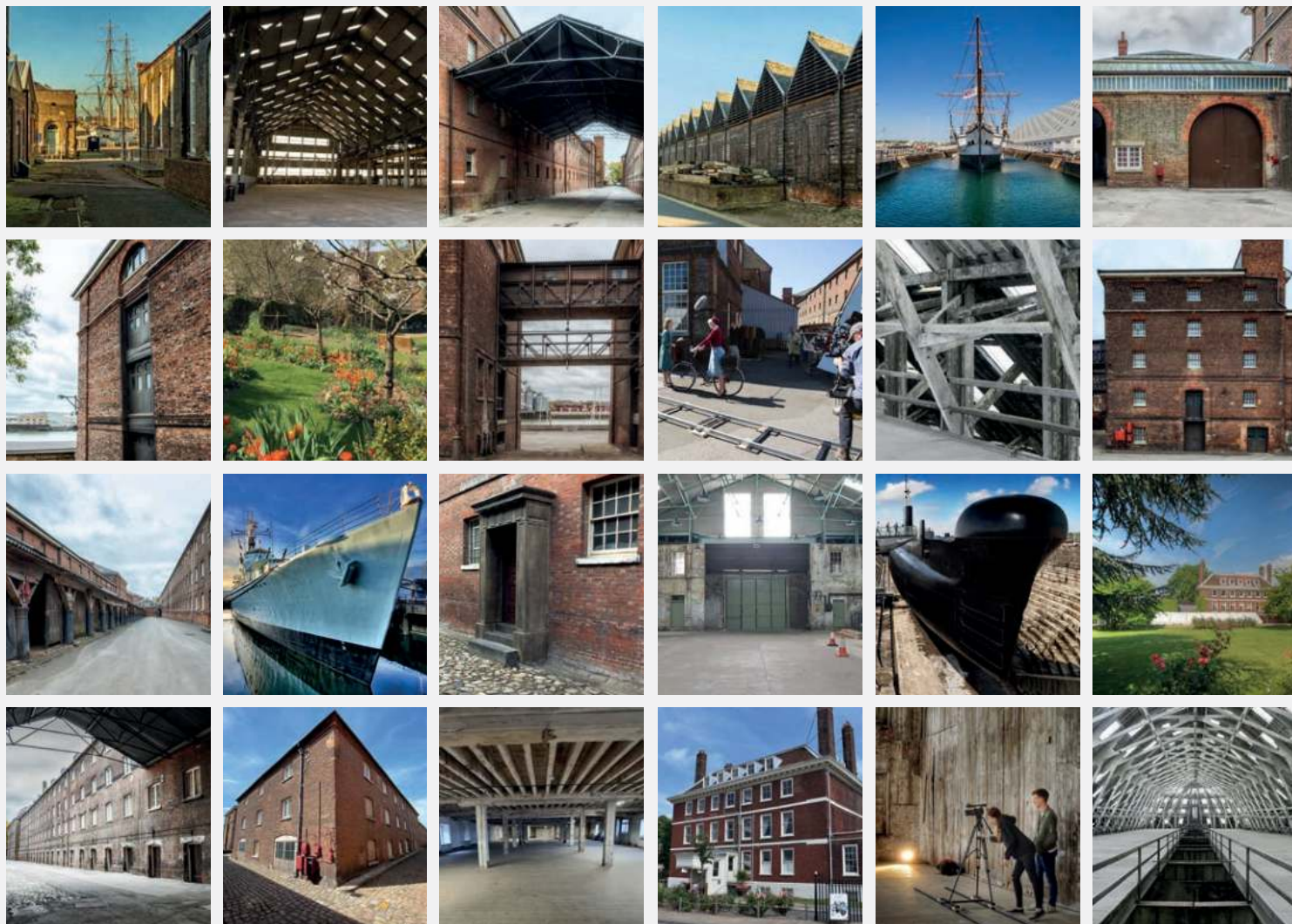
We are just 50 minutes by road from central London, as well as being served by high speed trains from St. Pancras International (35 minutes).



PRIVATE ESTATE

A private and discreet site with easy control of access. Our walled and gated environment provides safety for all within our location.





LIAISON

From the initial enquiry until the end of your shoot, our team will be on hand throughout. They will be both in office and on location during your time with us.



HAIR/MAKE-UP/COSTUME SPACE

With over 700m² of space to use, our costume area, is ideal for crews needing a holding area. The space is equipped with electric points, tables and chairs, making it perfect to use for hair, make-up, internal or general crowd holding.



ON SITE SECURITY

We have excellent 24/7 in-hour security with CCTV and we are able to work with your chosen security company to control access.



CREW SIZE

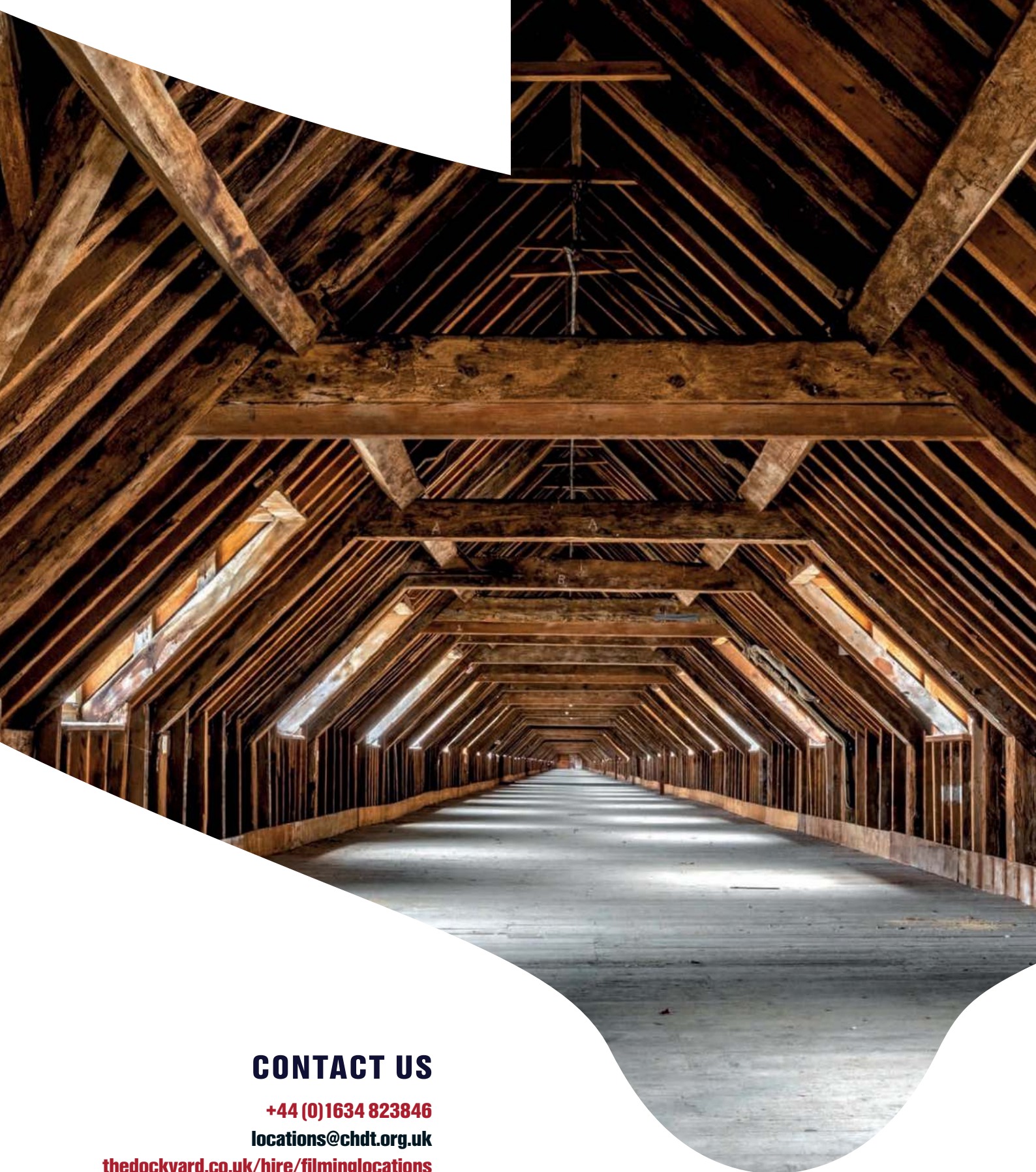
We can accommodate crews from small teams of two people to over 200 on our site.

“

It was a dream venue and your team are so easy to work with and very helpful. We really do appreciate you having us and making the shoot a success. We will highly recommend to other productions if looking for a filming venue in the area.

”

RDF TELEVISION



CONTACT US

+44 (0)1634 823846

locations@chdt.org.uk

thedockyard.co.uk/hire/filminglocations



**THE HISTORIC
DOCKYARD
CHATHAM**



Supported using public funding by
**ARTS COUNCIL
ENGLAND**



WE ARE A **MEDWAY** CHAMPION